

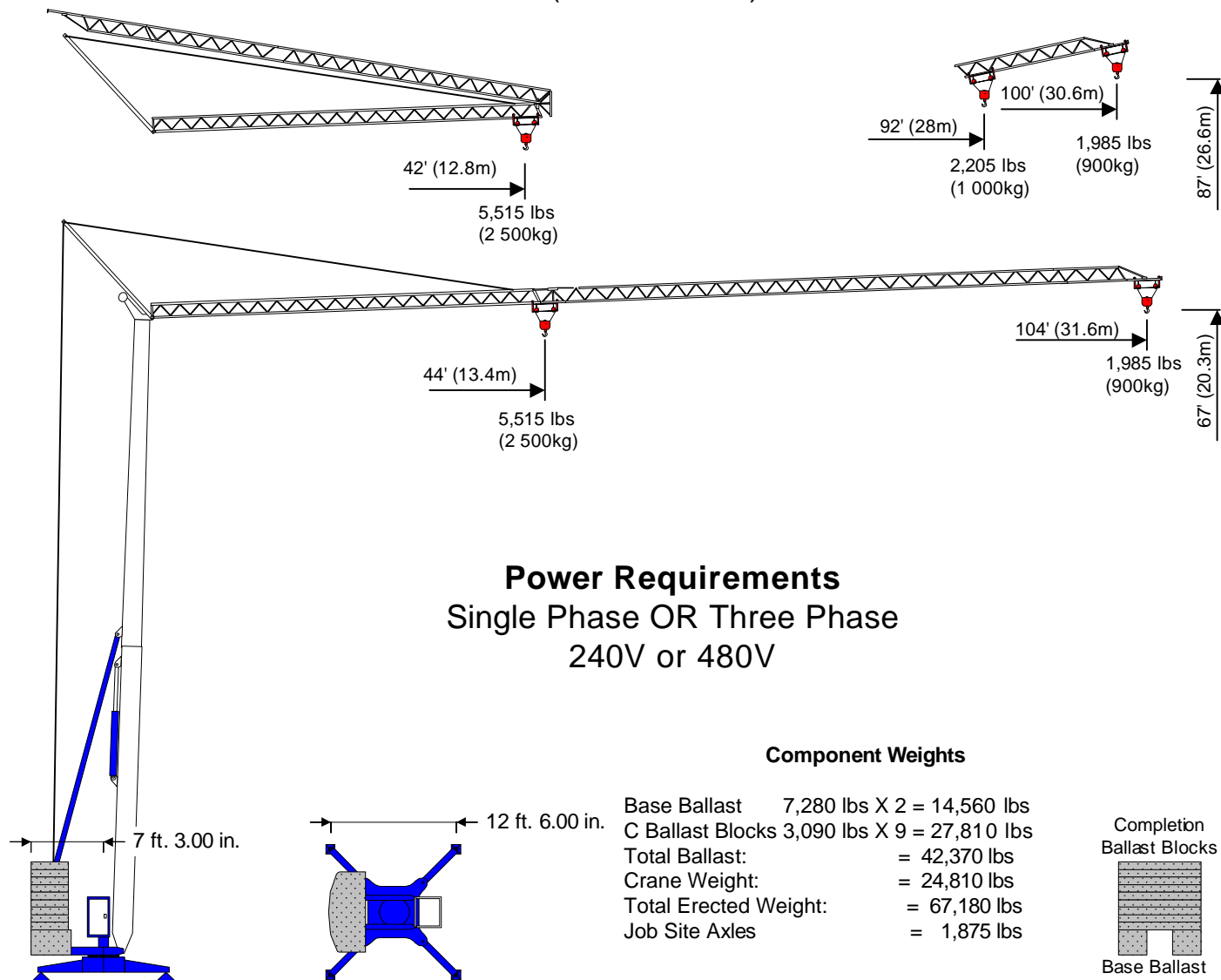
Benazzato

Self-Erecting Crane

20104 (294-S)



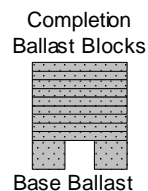
67' - 104' - 1,985 lbs
(20 - 32 - 900)



Power Requirements
Single Phase OR Three Phase
240V or 480V

Component Weights

Base Ballast 7,280 lbs X 2 = 14,560 lbs
C Ballast Blocks 3,090 lbs X 9 = 27,810 lbs
Total Ballast: = 42,370 lbs
Crane Weight: = 24,810 lbs
Total Erected Weight: = 67,180 lbs
Job Site Axles = 1,875 lbs



Hook	Ft.	44	45	49	52	59	66	72	79	85	92	98	104
Radius	Meters	13.4	13.8	15	16	18	20	22	24	26	28	29.8	31.6
104'	Lbs	5,513	5,292	4,829	4,476	3,881	3,440	3,065	2,756	2,514	2,293	2,139	1,985
31.6m	KG	2,500	2,400	2,190	2,030	1,760	1,560	1,390	1,250	1,140	1,040	0,970	0,900

Creative Lifting Services Inc.

Call Will Phone: 303-659-8102 Fax: 303-659-5314

will@creativelifting.com

www.creativelifting.com